

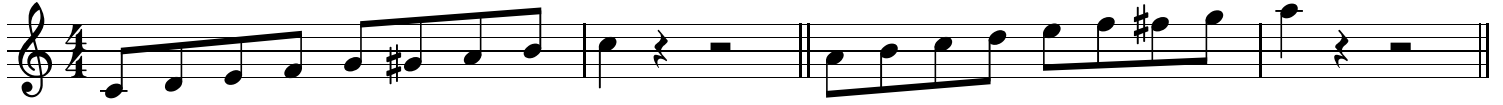
Bebop Scales

Half-Step Rules

Barry Harris, and many others

Major Scale (5th-6th)
CΔ6 CΔ7

Natural Minor Scale or Dorian Minor Scale (5th-6th)
A- A-7



Natural Minor Scale or Harmonic Scale (b7th-Tonic)
also a mode of Major Scale - see mm.1-2

Melodic Minor (5th-6th)

A- A-7 A-Δ7

A- A-6 A-Δ7



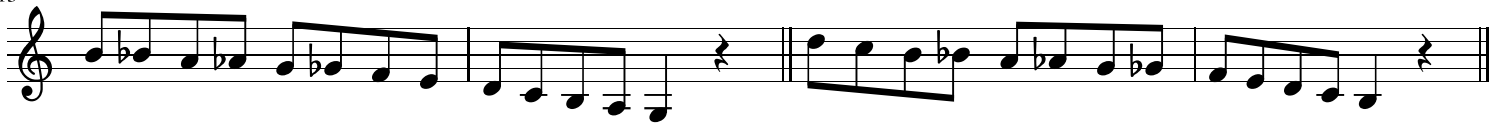
Dominant Scale (b7-Tonic)
G7 G9 G13

Major Scale (3rd-2nd; 2nd-Tonic; 6th-5th)
CΔ6 CΔ7



Dominant Scale (3rd-2nd; 2nd-Tonic; Tonic-b7)
G7 G9 G13

Dominant Scale (3-2; 2-1; Tonic-b7)
starting on 5th, ending on 3rd
G7 G9 G13



Major Scale (3rd-2nd; 2nd-Tonic; 6th-5th)
starting on 5th, ending on 3rd
CΔ6 CΔ7

Major Scale (6th-5th; 3rd-2nd; 2nd-Tonic; 6th-5th)
starting on 6th, ending on 5th
CΔ6 CΔ7

